

## NEW MALL - MAUN

- Set along The Gateway to the Okavango Delta
- Double road frontage for ease of access
- 2 minutes drive from Maun International Airport

**Plot 28434 & 16672:**  
**SERVICE STATION SECTION**  
5 Shop/Office Units, 2 Bank ATM slots

Double Frontage tarred road access  
24 parking bay areas

**OFFICE SECTION**  
Shops & Offices Block



## AGENT:

joel@okavangoproperties.com  
+267 71 440 110

*Your Oasis of Real Estate*



# BLUEBASE OKAVANGO BUSINESS CENTER

FILLING STATION + RETAIL SHOPS + OFFICES

AVAILABLE  
**2023**



**Plot 28434**  
SERVICE STATION SECTION  
5 Shop/Office Units, 2 Bank ATM slots

**Plot 16672**  
OFFICE SECTION  
Shops & Offices Block

[www.okavangoproperties.com](http://www.okavangoproperties.com)

**TO LET** 2 Modern Blocks: with Ground & First Floor Units  
Upmarket Shops & Office Accommodation: Sizes 100m<sup>2</sup> -900m<sup>2</sup>

AGENT: joel@okavangoproperties.com | +267 71 440 110

GABS: 318-1-649

MAUN: 686-5-686

FTOWN: 241-0-133

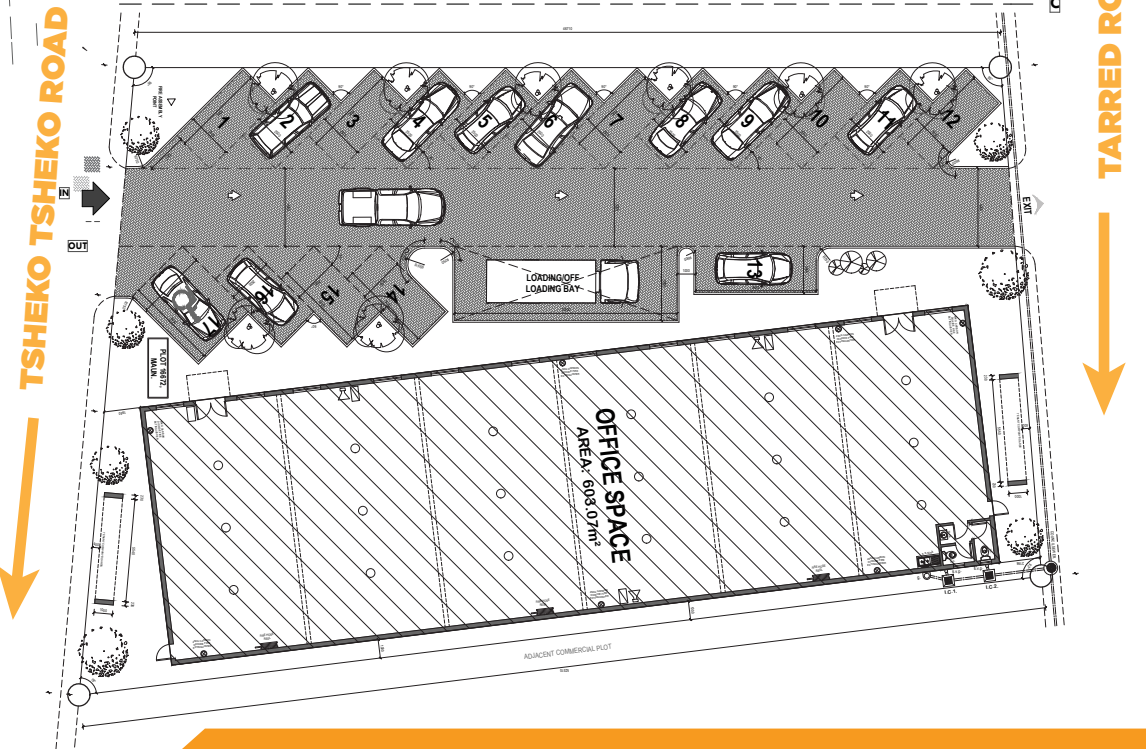
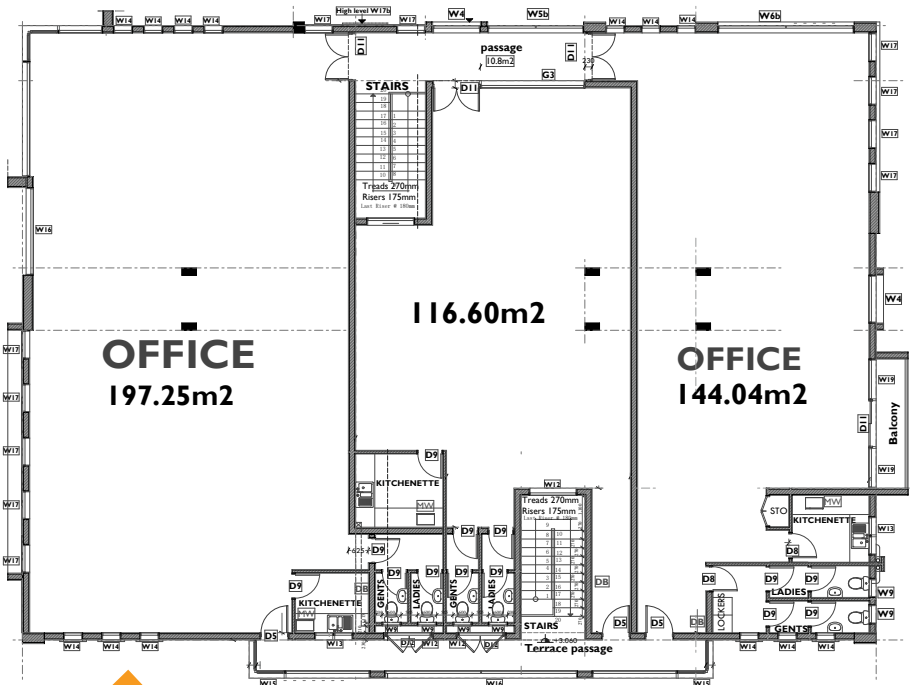
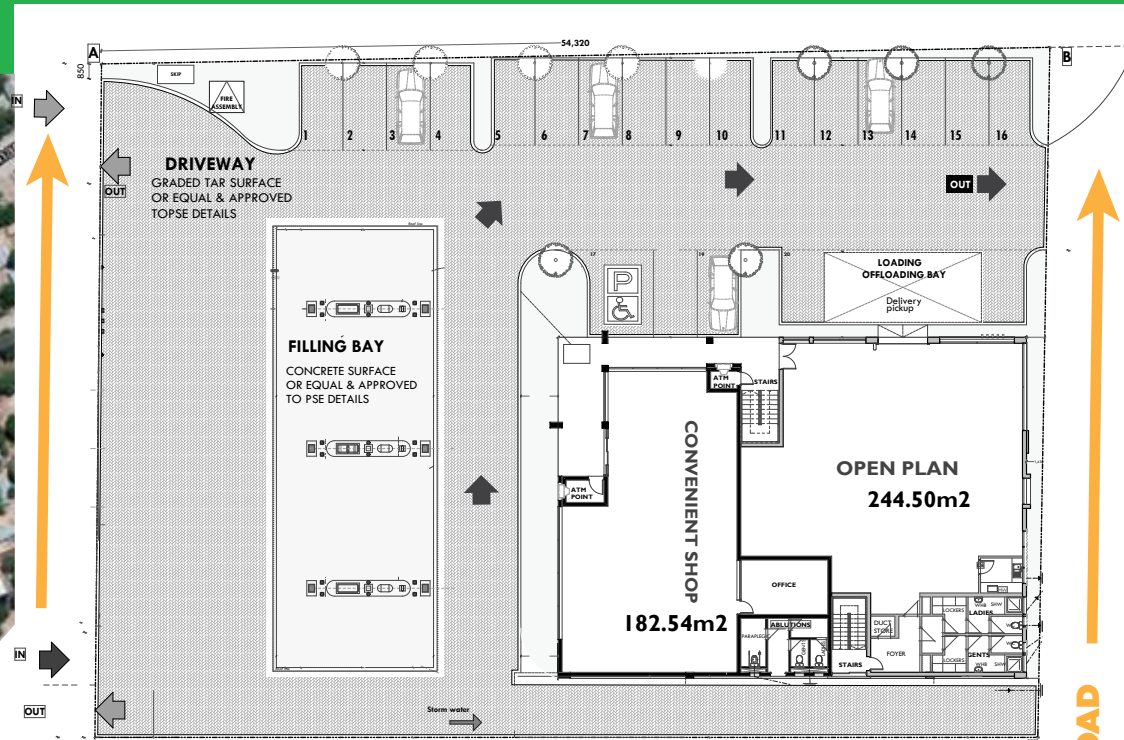


# MAJOR BRAND BUSINESSES WITHIN OUR SERVICE AREA

Maun Airport to Bluebase Okavango Business Centre (600metres)



# GROUND FLOOR & SITE PLAN FILLING STATION



FIRST FLOOR LAYOUT FILLING STATION

FIRST FLOOR & SITE LAYOUT OFFICE BLOCK